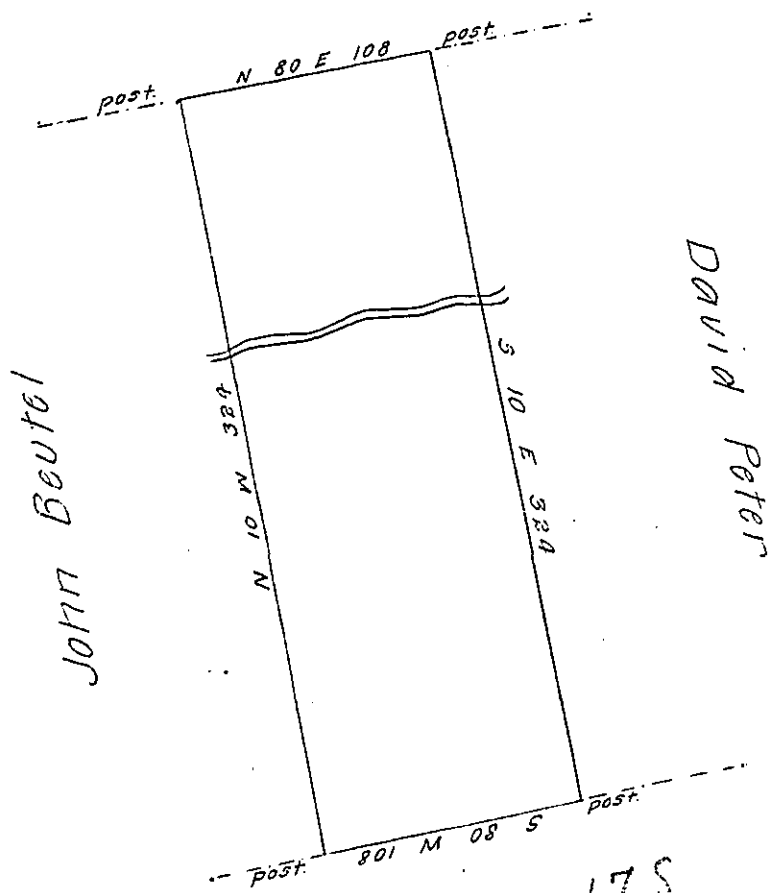


Hazle
Luzerne

Vacant Land



D-39-178
+110001
VACANT

By virtue of a warrant dated the 5th March 1789. Surveyed
(obl.) the 22th day May 1789 to Joachim Wigman the above
described tract of land situate on the Head waters of
Cramberry Creek a branch of Black Creek in Northamp-
ton County containing two hundred & six acres fifty one
Perches and the allowance of six P^r Cent &c.

P-Geo. Palmer. —

Daniel Brodhead Esq^r
Surveyor General.

IN TESTIMONY that the above is a copy of the original remaining on file in
the Department of Internal Affairs of Pennsylvania, made
conformably to an Act of Assembly approved the 16th day of
February, 1833, I have hereunto set my Hand and caused
the Seal of said Department to be affixed at Harrisburg,
this twenty-third day of April 1907.

Loach P. Brown
Secretary of Internal Affairs.